



M2 Monitor Arm

New product announcement

Introducing the next-generation monitor arm.



M2 Monitor Arm

Introducing the M2, an ingeniously simple monitor arm that combines serious performance, style and value. Through a clever new design innovation, the M2 offers a longer life, a more streamlined look, and a more eco-conscious choice than any traditional monitor arm.

Current-generation dynamically adjustable monitor arms utilize a gas cylinder to counterbalance the weight of the monitor. This adds heft and bulk to the monitor arm and makes it more prone to failure, as gas cylinders have a limited lifespan and eventually leak gas and lose pressure.

The new M2 utilizes an innovative mechanical spring in place of a gas cylinder. This new solution allows the M2 arms to be thinner, lighter, more maneuverable and far more durable than traditional arms, without sacrificing strength and weight-load capacity.

What's more, the streamlined, minimal-part design enables an unmatched price point for an arm with the M2's features and quality.



M2 Monitor Arm



THE M2 & THE ENVIRONMENT

At Humanscale, we believe performance and sustainability are complementary outcomes of good design. The M2 is an outstanding example of this philosophy.

Through exceptional design, the M2 achieves a high level of function and sleek looks while requiring less raw material and fewer manufacturing processes in its creation. And by eliminating the most failure-prone component of current-generation dynamically adjustable arms—the gas spring—the M2 is assured the longest life possible. It is the last monitor arm you will ever need to buy—the ultimate sustainability achievement.

Additionally, the M2's slim profile and light weight allow for less packaging materials and less fuel required for shipping.

Made from 52% recycled and 99% recyclable content, the M2 ships in 85% recycled packaging and can be integral to the achievement of a number of valuable LEED credits.

M2 Monitor Arm

LEED for Commercial Interiors

Materials & Resources

Credit 4.1

Recycled Content, 10%

Credit 4.2

Recycled Content, 20%

Innovation & Design

Credit 1.1 – 1.4

Innovation in Design: Ergonomics Strategy

LEED for New Construction

Materials & Resources

Credit 4.1

Recycled Content, 10%

Credit 4.2

Recycled Content, 20%

Innovation & Design

Credit 1.1 – 1.4

Innovation in Design: Ergonomics Strategy

LEED for Existing Buildings

Innovation in Operations

Credit 1.1 – 1.4

Innovation in Design: Ergonomics Strategy

M2 Monitor Arm

FEATURES & SPECIFICATIONS

Quick-Facts

- Innovative design using less parts promotes increased reliability and cost-savings
- First fully articulating arm without a gas spring
- 15-year 24/7 warranty

Functionality

- Supports 95% of monitors in use today (up to 24 inches diagonal, up to **9kg**.)
- Counterbalances monitor with simple hex screw adjustment
- 250mm height adjustment range
- Arm reach: 0 – 500mm from the center of the mount to the back of the monitor
- Link dimensions: 28mm thick
- Weight: 2.25kg
- Interchangeable mounting options include clamp mount for desk edge or grommet, and desktop bolt-through mount
- Integrated cable management hides cables within the arm

Sustainability

- Made of 52% recycled and 99% recyclable materials
- Utilizes less raw materials—and less of the Earth's limited resources—than traditional monitor arms
- Designed to require fewer parts—requiring fewer manufacturing processes—than traditional monitor arms
- Slim design and light weight requires less energy to ship than traditional monitor arms
- Will never need to be replaced

Aesthetics

- Slim, contemporary look
- Sets standard of elegance in monitor arm design
- Finish options
 - Polished aluminum with white accents
 - Silver with gray accents

Packaging Specs

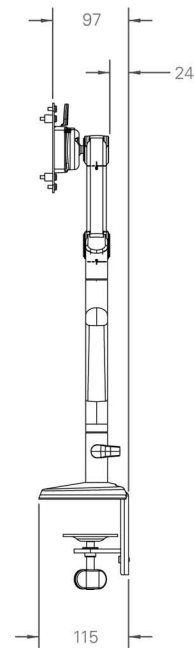
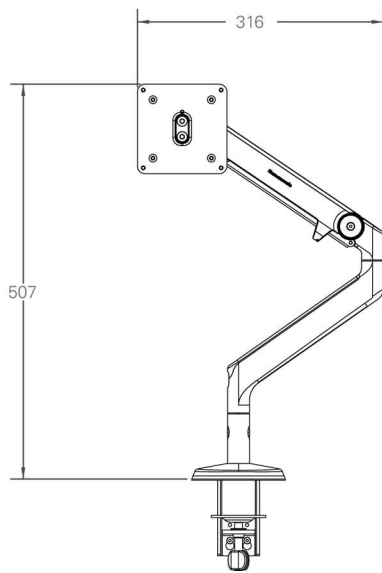
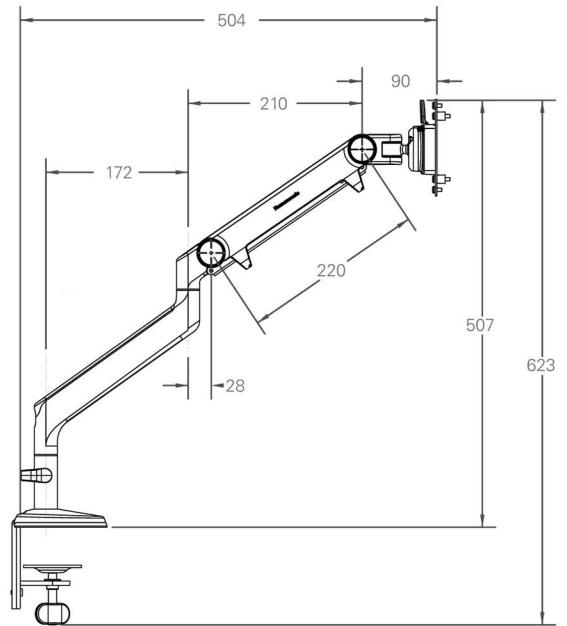
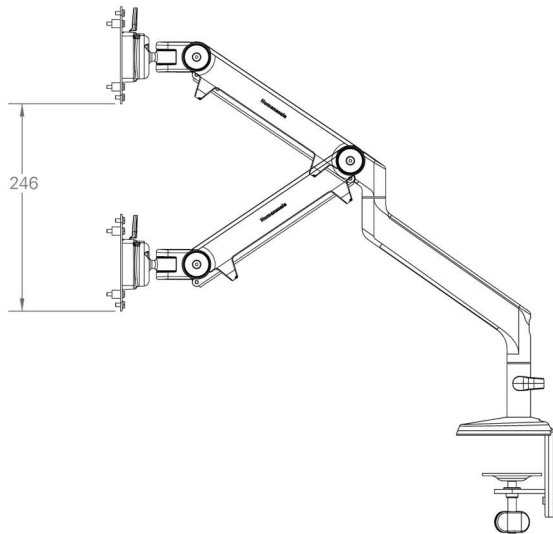
- Single Packaged Unit
 - Dimensions: 380 x 545 x 125mm
 - Weight: 3.7kg
- Master Carton
 - Number of Units: 5
 - Dimensions: 685 x 560 x 405mm
 - Weight: 20.4kg



M2 Monitor Arm

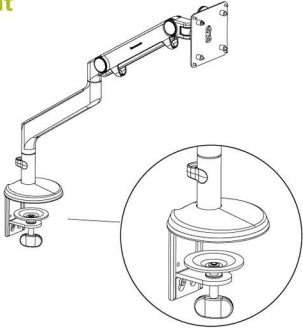
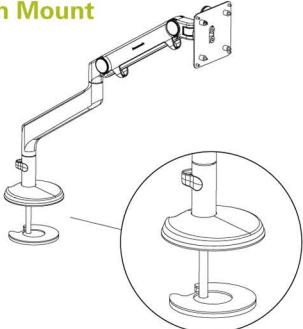
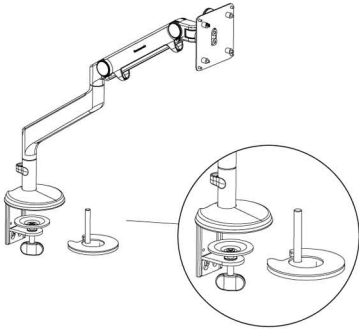
Dimensions

(in millimeters)



M2 Monitor Arm

M2 PRICE LIST

	Polished Aluminum/ White Trim	Silver/Gray Trim
Clamp Mount 	£165	£165
Bolt-Through Mount 	£165	£165
Dual Mount 	£185	£185

**Special mounts available upon request - contact your Humanscale rep for pricing and more information.*